



【中国运营中心】CHINA OPERATION CENTER
HOTLINE:400-078-0177 website:www.astipaint.com
NO. 19, SANSHUI INDUSTRIAL PARK, SHATANG VILLAGE, LEPING
TOWN, SANSHUI DISTRICT, FOSHAN CITY, GUANGDONG PROVINCE



阿斯蒂 | 莫兰迪微水泥系列
ASTI MORANDI MICRO CEMENT

MICRO CEMENT

关于ASTI莫兰迪微水泥

灵感源于西方灰调大师乔治莫兰迪(GIORGIO MORANDI),摒弃繁杂的表现形式,把静谧与简约镌刻于工业微水泥的极致优雅,高度还原工业本真之美,通过全新的生产工艺,把细腻的自然质感与极简的水泥形态完美融合,简约至美且质感丰富,探索侘寂、极简、工业风等装修顶流的设计精髓。

ASTI莫兰迪微水泥的适用性更广泛,不拘束于任何空间,打造出连续、灵动、整体化的视觉空间,让艺术更艺术。

Inspired by Giorgio Morandi, a Western grey tone master, he abandoned complicated forms of expression, engraved tranquility and simplicity in the extreme elegance of industrial micro cement, and highly restored the true beauty of industry. Through a new production process, he perfectly integrated the delicate natural texture with the minimalist cement form, simple to beautiful and rich in texture, and explored the design essence of tranquility, minimalism and industrial style.

ASTI morandi micro cement has a wider applicability and is not confined to any space, creating a continuous, flexible and integrated visual space to make art more artistic.

ASTI MORANDI MICRO CEMENT ↑



耐磨损
WEAR RESISTANCE



耐脏污
DIRT RESISTANCE



易清理
EASY TO CLEAN





高强度粘附性

双组分微水泥对各种基底的粘附性更好,可以直接施工于大理石,瓷砖,木板,水泥板等基材表面

HIGH STRENGTH ADHESION

The two-component micro cement has better adhesion to various substrates and can be directly applied to the surface of marble, ceramic tile, wood board, cement board and other substrates.



高抗压强度

微水泥的抗压强度达到30Mpa,远远高于其它常规地坪材料

HIGH COMPRESSIVE STRENGTH

The compressive strength of micro cement reaches 30Mpa, which is much higher than that of other conventional floor materials.



A级防火等级

A级不燃型材料,满足各类空间应用

CLASS A FIRE RATING

Class a non combustible materials to meet various space applications.



丰富的色彩

微水泥采用矿物色浆进行调色,在满足色彩的应用同时,保证颜色经久不褪色

RICH COLORS

The micro cement is tinted with mineral color paste to meet the application of color and ensure that the color will not fade for a long time.



绝佳的耐水性

微水泥拥有绝佳的耐水性,应用在卫生间的微水泥可以长期承受冷热水的冲刷,为狭小的卫浴空间设计创造了更多的可能

EXCELLENT WATER RESISTANCE

Micro cement has excellent water resistance. The micro cement applied in the bathroom can withstand the scouring of cold and hot water for a long time, creating more possibilities for the design of narrow bathroom space.



优秀的柔韧性

双组分微水泥有着较高的柔韧性,即便弯折90度都不会开裂

EXCELLENT FLEXIBILITY

Two component micro cement has high flexibility and will not crack even if bent 90 degrees



优秀的抗污性

可乐,咖啡,酱油,油渍,茶渍,红酒等弱酸弱碱性的污渍,不会对微水泥造成任何的损害,微水泥的清理非常的简单

EXCELLENT STAIN RESISTANCE

Weak acid and weak alkaline stains such as coke, coffee, soy sauce, oil, tea and red wine will not cause any damage to micro cement. The cleaning of micro cement is very simple.

无机色浆 INORGANIC COLOR PASTE

主要用于微水泥的着色,全系列颜色分为20款,参考色卡的固定配比量调制自己想要的颜色。使用前先摇匀。

包装规格 200G/瓶

无机色浆,每款颜色按照不同的色浆调制成品颜色,同款颜色中,摄入量参照如下:

- 1. 17KG微水泥细+30G色浆
- 2. 17KG微水泥细+70G色浆
- 3. 17KG微水泥细+120G色浆
- 4. 17KG微水泥细+200G色浆

可以任意调节兑入的色浆重量,实现不同颜色。

Mainly used for the coloring of micro cement, the whole series of color is divided into 20 reference color card fixed proportion modulation of their own color. Shake well before using.

Packing specification 200G/ bottle

Inorganic color paste, each color according to a different color paste color of the finished product color intake of the same color according to the following:

- 1. 17kg micro cement fine +30G color paste
- 2. 17kg micro cement fine +70G color paste
- 3. 17KG micro cement fine +120G color paste
- 4. 17kg micro cement fine +200G color paste

You can adjust the weight of the paste to achieve different colors.



材料配比 MATERIAL RATIO

- 1. 封闭渗透剂
直接使用,不可加水
施工理论4-6m²/kg
凝固时间4-6h
包装重量:5kg

1.Blocking agent
Do not add water for direct use
Setting time: 4-6h
Packaging weight :5kg
Construction theory :4-6m²/kg

- 2. 微水泥粗砂
微水泥主材15kg+添加剂5kg混合搅拌均匀后方可使用,产品混合后请在6h内使用完。
包装规格:微水泥主材15kg 添加剂:5kg
施工理论:1.2-1.5kg/m²

2.Micro cement coarse sand
Micro cement main material 15kg+ additive 5kg can be used after mixing evenly, the product after mixing please use up within 6h.
Packing specification: micro cement main material 15kg additive :5kg
Construction theory :1.2-1.5kg/m²

- 3. 微水泥中砂
微水泥主材15kg+添加剂5kg混合搅拌均匀后方可使用,产品混合后请在6h内使用完。
包装规格:微水泥主材15kg 添加剂:5kg
施工理论:0.8-1.2kg/m²

3.Sand in micro cement
Micro cement main material 15kg+ additive 5kg can be used after mixing evenly, the product after mixing please use up within 6h.
Packing specification: micro cement main material 15kg additive :5kg
Construction theory :0.8-1.2kg/m²

- 4. 微水泥细砂
微水泥主材12kg+添加剂5kg混合搅拌均匀后方可使用,产品混合后请在6h内使用完。
包装规格:微水泥主材12kg 添加剂:5kg
施工理论:0.5-0.7kg/m²

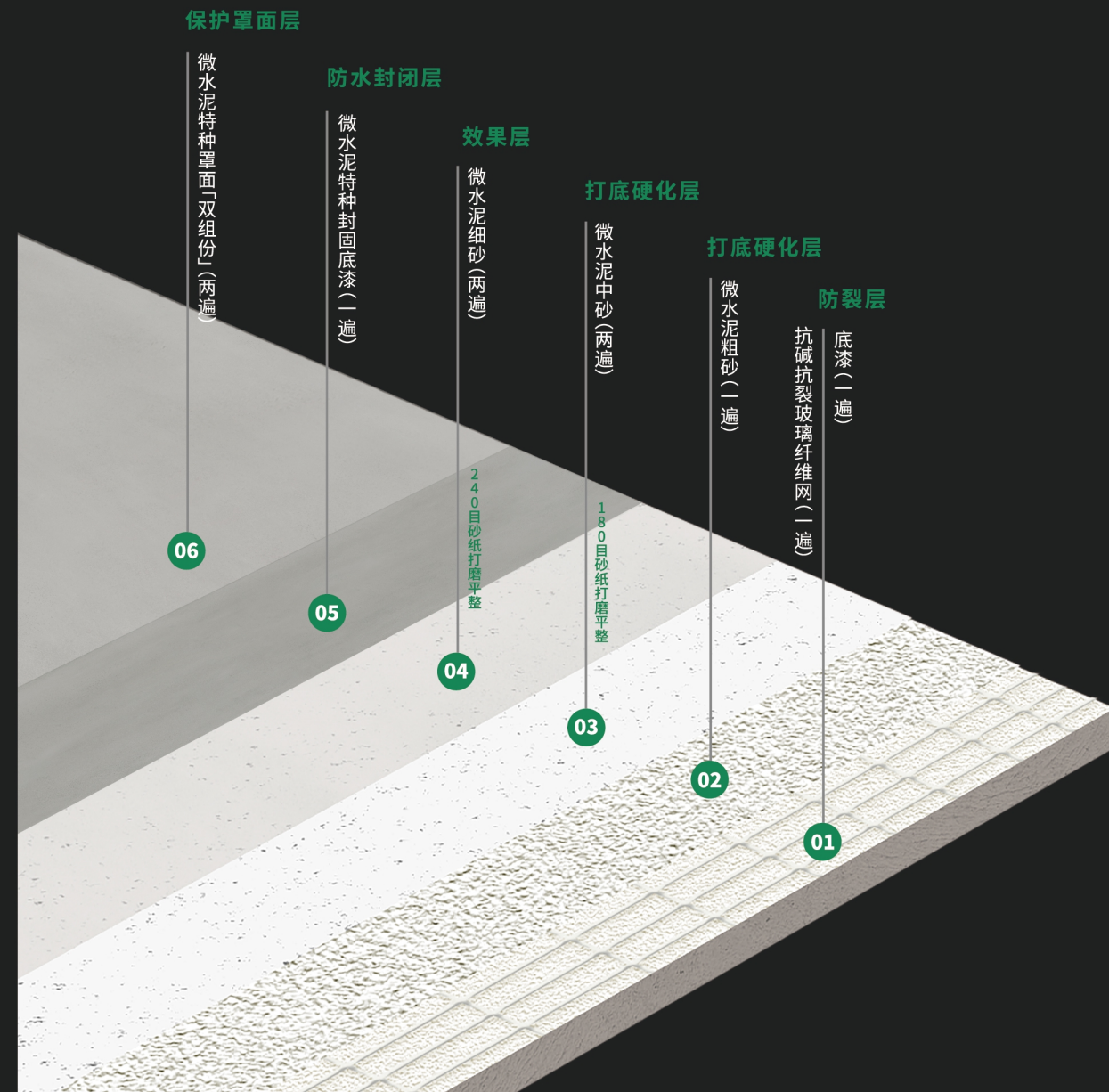
4.Micro cement fine sand
Micro cement main material 12kg+ additive 5kg can be used after mixing evenly, please use up the product within 6h after mixing.
Packing specification: micro cement main material 12kg additive 5kg
Construction theory :0.5-0.7kg/m²

- 5. 双组份水性聚氨酯面漆
面漆主材+固化剂混合后使用,使用比例4:1
包装规格:面漆主材4kg/桶 固化剂1kg/瓶
施工理论:25-30m²/套

5.Two component waterborne polyurethane finish
Top paint main material + curing agent mixture after use, use ratio 4:1
Packaging specifications: top paint main material 4kg/ bucket curing agent 1kg/ bottle
Construction theory :25-30m²/ set

莫兰迪微水泥分层构造示意图

MORANDI DIAGRAM OF STRATIFIED STRUCTURE



01 防裂层

- 1、水泥渗透界面剂
产品作用:封闭水泥基层,防止基层水泥起砂
- 2、抗碱抗裂玻璃纤维网格布
产品作用:增强抗裂效果
产品要求:8目高密

02 打底硬化层

- 打底/基础微水泥粗砂
产品作用:增强底部微水泥的硬度,防止高压凹凸陷
产品要求:微水泥粗砂打底找平,石英颗粒大小>60目

03 打底硬化层

- 打底/基础微水泥中砂
产品作用:增强底部微水泥的硬度,防止高压凹凸陷
产品要求:微水泥中砂打底找平,石英颗粒大小>60目

04 效果层

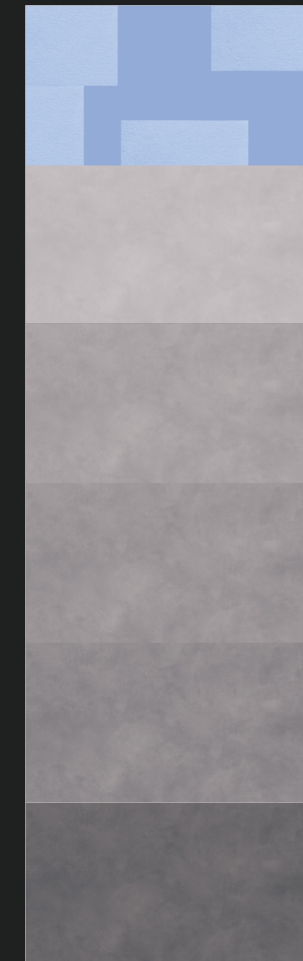
- 效果/面层微水泥细砂
产品作用:呈现微水泥的持有产品效果
产品要求:微水泥细砂,石英颗粒大小<90目

05 防水封闭层

- 封闭渗透剂
产品作用:增强水泥硬度,封闭毛细孔,防止液体渗透
产品要求:成分包含水泥固化剂及防水

06 保护罩面层

- 双组份聚氨酯罩面
产品作用:增强耐磨性,防污,抗酸碱腐蚀
产品要求:双组份,水性聚氨酯



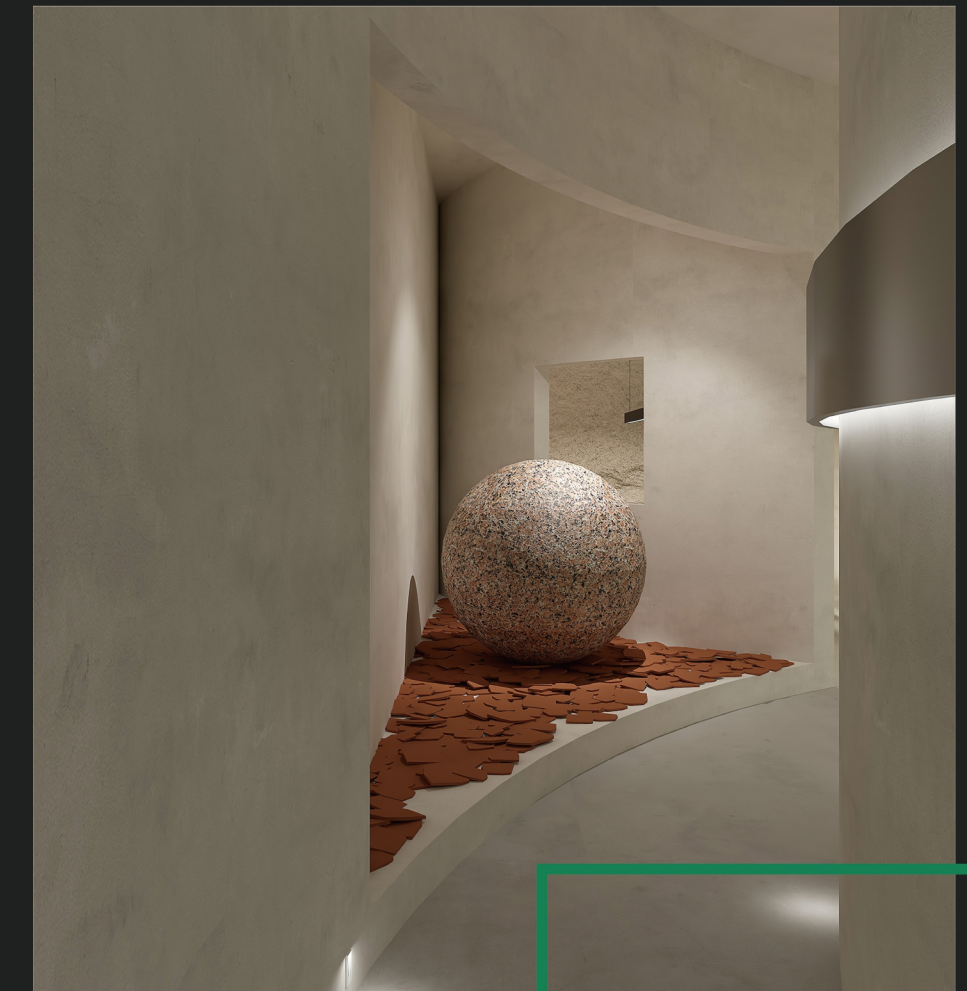
辊涂第一遍 Mixed Resin 混合树脂	Apply 1 coat of Mixed Resin	01
批刮第一遍调好颜色的 Microcement SURFACE 面层微水泥 6h完全干燥 使用180目砂纸打磨平整	Apply another coat of color ready Microcement SURFACE with color After 6 hours, smooth with 180 Grit sandpaper	02
批刮第二遍调好颜色的 Microcement SURFACE 面层微水泥 6h完全干燥 使用180目砂纸打磨平整	Apply 1 coat of color ready Microcement SURFACE with color After 6 hours, smooth with 180 Grit sandpaper	03
辊涂第一遍 Perfect Sealer 封闭剂	Use roller apply 1 coat of Perfect Sealer	04
辊涂第二遍 Perfect Sealer 封闭剂 4h完全干燥 使用240目砂纸打磨平整	Use roller apply 1 coat of Perfect Sealer After 4 hour, smooth with 240 Grit sandpaper	05
辊涂二遍 PU Sealant 双组份聚氨酯罩面	Use roller apply 2 coat of PU Sealant	06

施工工具:

电子台秤、手持搅拌器、电动打磨机、吸尘器、不锈钢批刀、4MM短羊毛辊筒、微水泥专业铝合金分隔线条

Construction tools:

Electronic platform scale, hand-held mixer, electric grinding machine, vacuum cleaner, stainless steel batch knife, 4mm short wool drum, micro cement professional aluminum alloy separation lines



特别说明:

墙面微水泥施工完成后,24小时内须保持完全封闭状态,不可触碰及污染。
72小时固化期结束后,可常规使用。15天后,微水泥达到最佳使用状态,方可正常使用。

Special note:

After the completion of the wall micro cement construction, the wall must be completely closed within 24 hours, not touch and pollution.
After the 72-hour curing period, it can be used routinely. After 15 days, the micro cement can be used normally after reaching the best use state.

INTERESTING PAINT

以意大利元素、风格、色彩为产品注入灵魂，随心所欲，突破固有陈规，个性色彩与工业美学无缝拼接，彰显一种自由开放的心态，绽放原汁原味的意式魅力，让艺术更艺术。

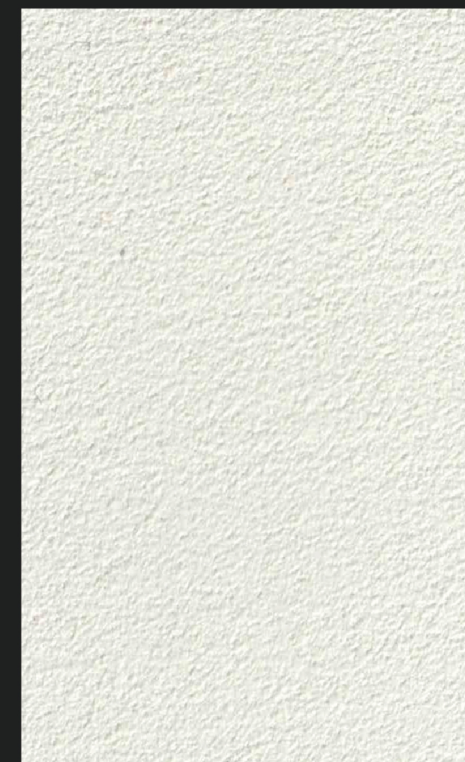
Take Italian elements, styles and colors as the soul of the products, break through the inherent stereotypes at will, seamlessly combine personalized colors with industrial aesthetics, highlight a free and open mind, bloom the original Italian Charm, and make art more artistic.

MORANDI MICRO CEMENT

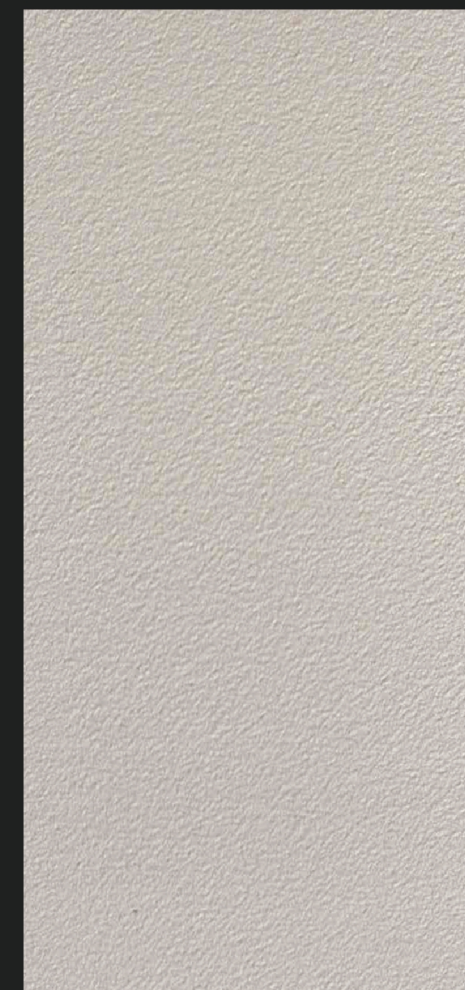


当低饱和度的莫兰迪色系遇上微水泥，素雅高级的色系叠加侘寂风格的艺术空间，将微水泥的品质感和属性表现得淋漓尽致，在保证视觉整洁统一的同时，没有强烈的冲击感而带来的审美疲劳，并在交错重构的体块设施中，将人引向未知而崭新的独立空间。

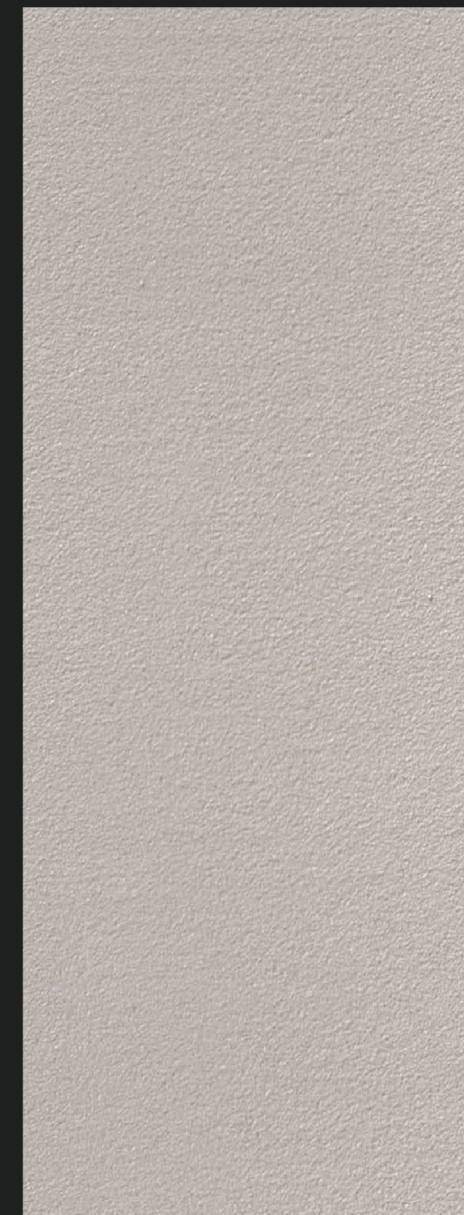
When the low saturation Morandi color system meets micro cement, the simple and elegant and advanced color system superimposes the quiet style art space, which incisively and vividly displays the quality sense and attributes of micro cement. While ensuring the visual cleanliness and unity, there is no aesthetic fatigue caused by strong impact, and leads people to an unknown and brand-new independent space in the staggered reconstruction of block facilities.



ASTI-MC-CRUDE



ASTI-MC-MEDIUM



ASTI-MC-FINE

INTERESTING PAINT

ASTI莫兰迪微水泥是一种无机型矿物混合材料，从而耐磨性、耐污性、粘接性等得到全面提升，柔和细腻的水泥质感，勾勒出细微的起伏肌理，内敛且优雅的饰面，难掩微质感的张力，且素雅高级的柔光色系，丰富多样，因此深受许多当代艺术家的追捧。

ASTI Morandi micro cement is a kind of inorganic mineral mixed material, which has comprehensively improved its wear resistance, stain resistance and adhesion. The soft and delicate cement texture outlines the subtle undulating texture. The introverted and elegant finish can not hide the tension of the micro texture, and the plain, elegant and high-grade soft light color system is rich and diverse, so it is deeply sought after by many contemporary artists.

INTERESTING PAINT

摒弃多余的装饰,采用线条与弧形的搭配设计,线条利落,棱角分明。在材质、采光以及色彩间,空间感层层递进。

高级的微水泥纹理质感,使其在追求功用的同时,更是艺术品般的存在,交汇于空间之中,演绎一场极致的艺术生活。

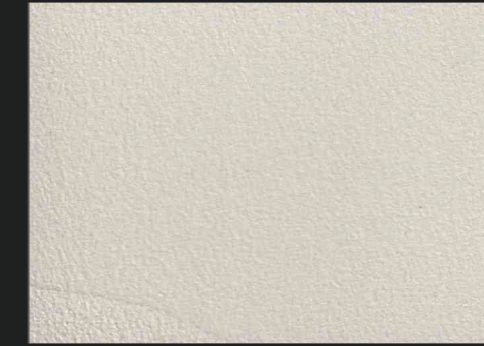
Abandon redundant decoration and adopt the matching design of lines and arcs, with neat lines and clear edges and corners. In the material, lighting and color, the sense of space is progressive layer by layer.

The high-grade micro cement texture makes it not only pursue function, but also exist like a work of art. It meets in the space and deduces an ultimate artistic life.

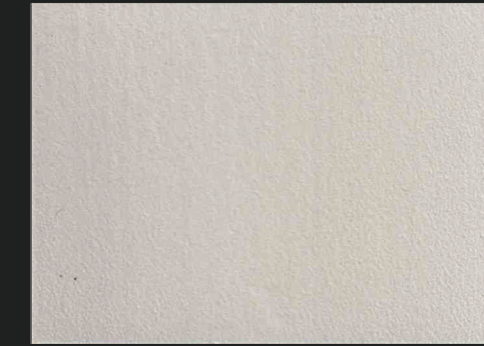
MORANDI MICRO CEMENT



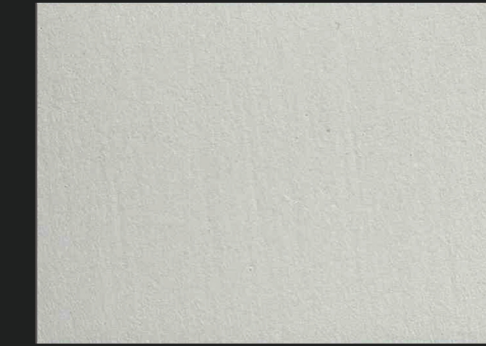
ASTI-MC0211(30g)



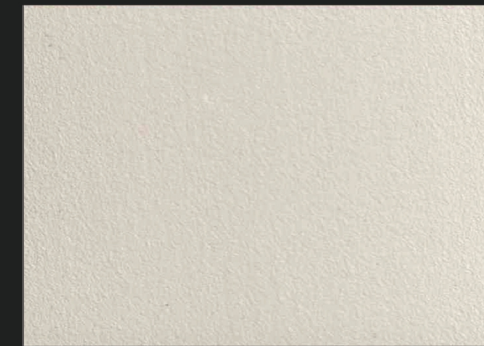
ASTI-MC0221(30g)



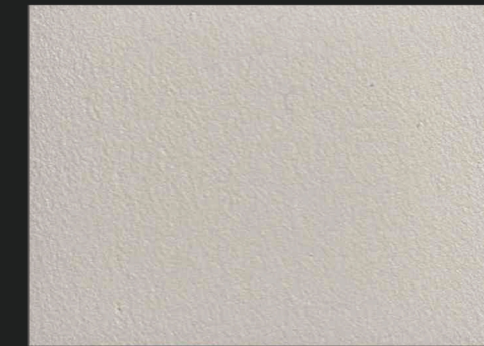
ASTI-MC0231(30g)



ASTI-MC0241(30g)



ASTI-MC0212(70g)



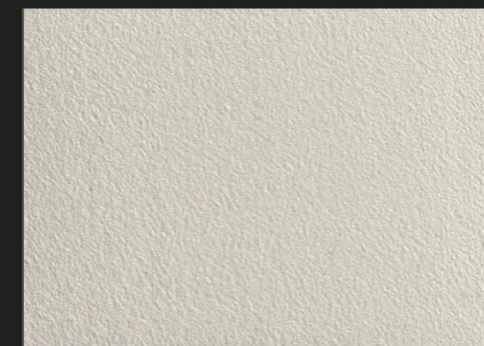
ASTI-MC0222(70g)



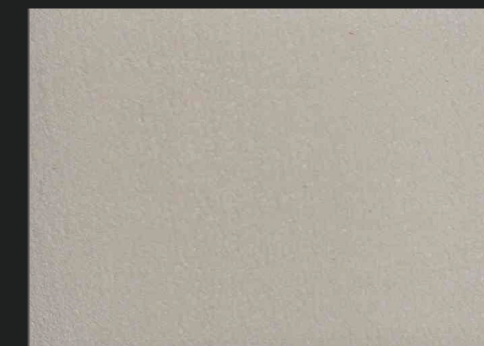
ASTI-MC0232(70g)



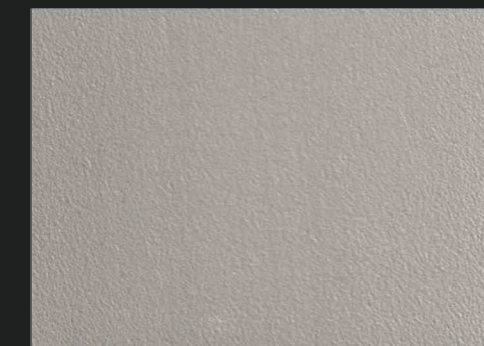
ASTI-MC0242(70g)



ASTI-MC0213(120g)



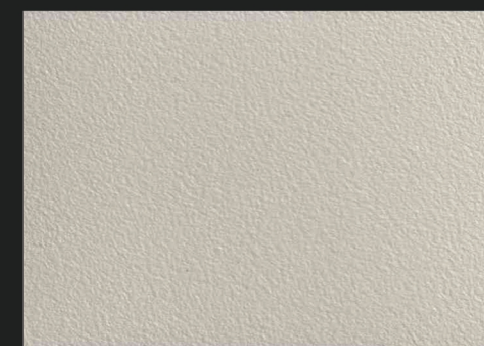
ASTI-MC0223(120g)



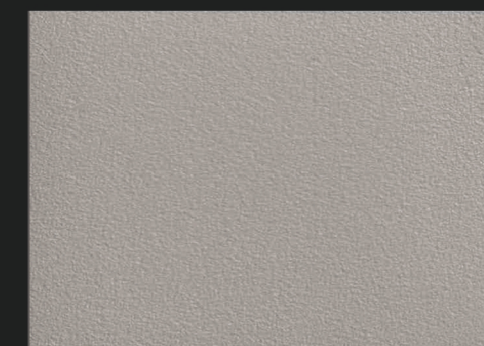
ASTI-MC0233(120g)



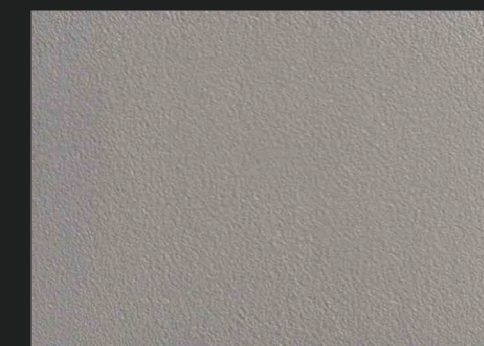
ASTI-MC0243(120g)



ASTI-MC0214(200g)



ASTI-MC0224(200g)



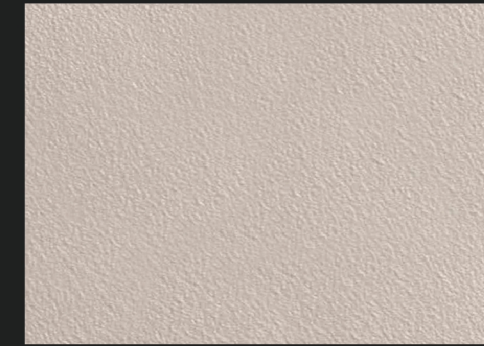
ASTI-MC0234(200g)



ASTI-MC0244(200g)

灵动的线条、斑驳的光影、柔和细腻的质感为空间营造出治愈的氛围感,摒弃掉鲜亮明艳的色彩,同样无需复杂的图案装饰,在最朴实无华的搭配里,彰显自然、质朴而富有质感的美学空间。

Flexible lines, mottled light and shadow and soft and delicate texture create a healing atmosphere for the space, abandon the bright and bright colors, and also do not need complex pattern decoration. In the most simple collocation, they highlight the natural, simple and textured aesthetic space.



ASTI-MC0251(30g)



ASTI-MC0261(30g)



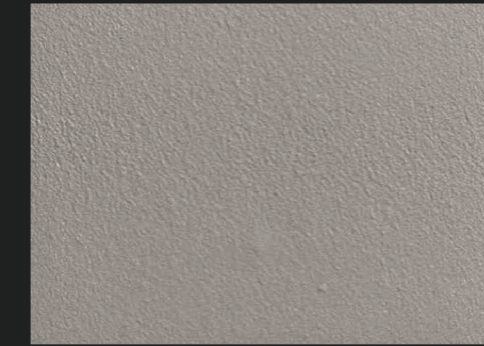
ASTI-MC0271(30g)



ASTI-MC0281(30g)



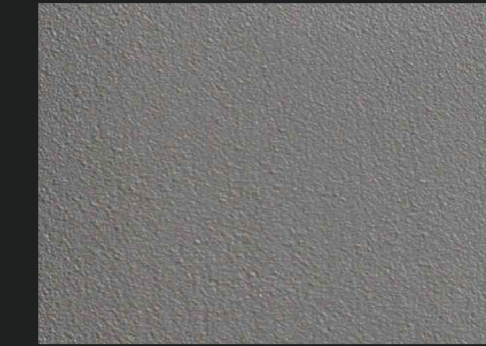
ASTI-MC0252(70g)



ASTI-MC0262(70g)



ASTI-MC0272(70g)



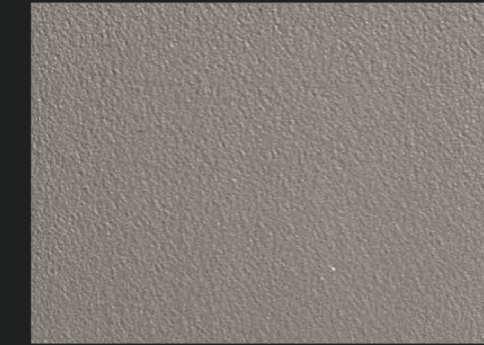
ASTI-MC0282(70g)



ASTI-MC0253(120g)



ASTI-MC0263(120g)



ASTI-MC0273(120g)



ASTI-MC0283(120g)



ASTI-MC0254(200g)



ASTI-MC0264(200g)



ASTI-MC0274(200g)



ASTI-MC0284(200g)

INTERESTING PAINT

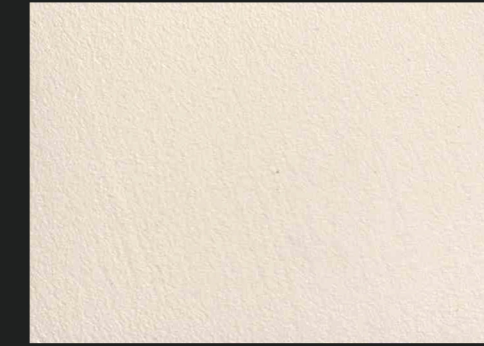
低饱和度的色彩与微质感肌理,还原水泥立体视觉感的同时,瞬间激发起人们对美感与高级感的无限想象。搭配旋转楼梯利落的线条以及连贯的界面延伸,勾勒出质朴却不乏高级感的办公空间。

The low saturation color and micro texture texture can restore the three-dimensional visual sense of cement and instantly stimulate people's infinite imagination of beauty and advanced sense. With the neat lines of the rotating stairs and the continuous interface extension, it outlines a simple but high-level office space.

MORANDI MICRO CEMENT



ASTI-MC0291(30g)



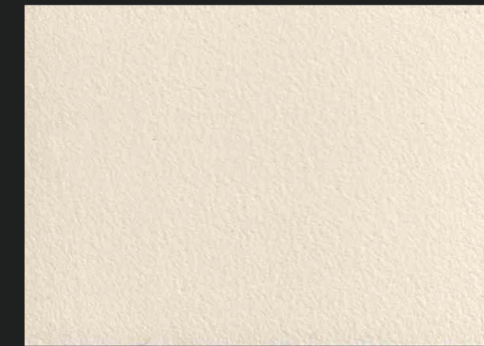
ASTI-MC0301(30g)



ASTI-MC0311(30g)



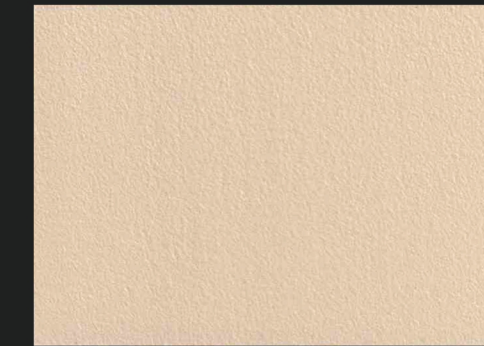
ASTI-MC0321(30g)



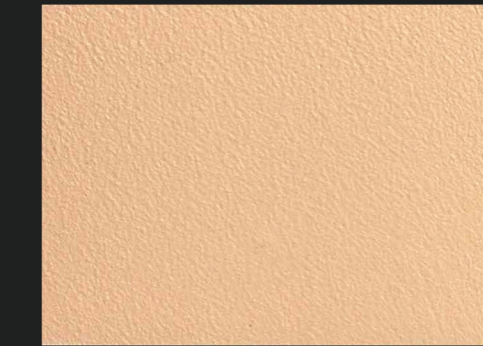
ASTI-MC0292(70g)



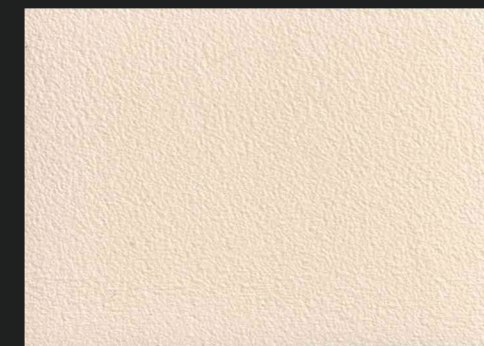
ASTI-MC0302(70g)



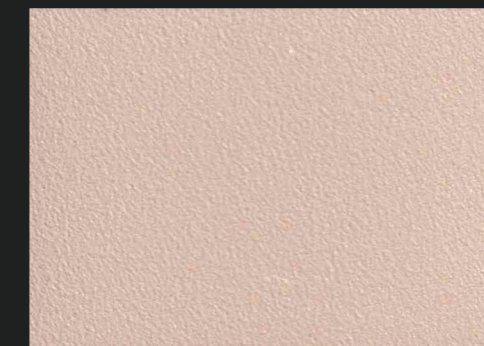
ASTI-MC0312(70g)



ASTI-MC0322(70g)



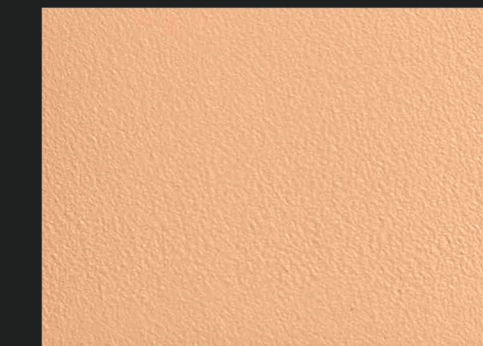
ASTI-MC0293(120g)



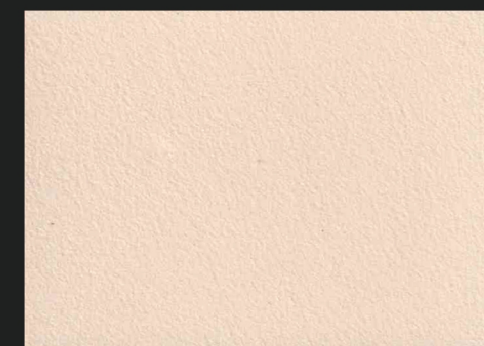
ASTI-MC0303(120g)



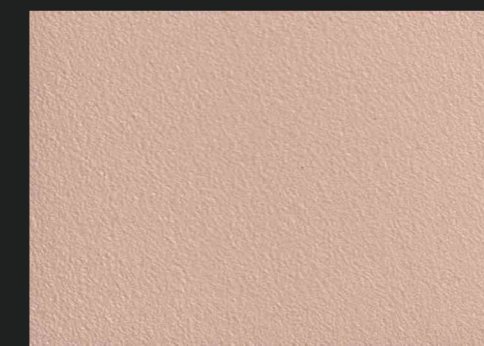
ASTI-MC0313(120g)



ASTI-MC0323(120g)



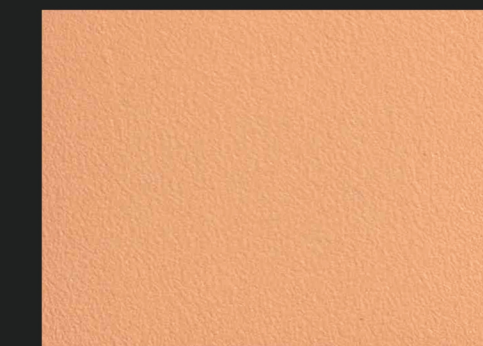
ASTI-MC0294(200g)



ASTI-MC0304(200g)



ASTI-MC0314(200g)



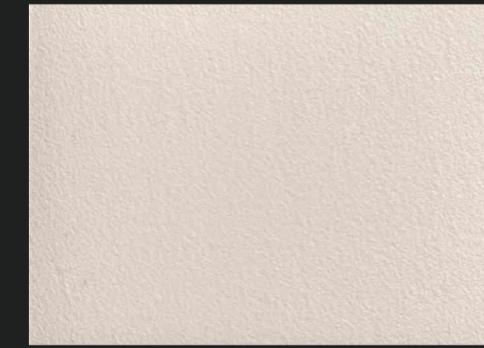
ASTI-MC0324(200g)

富有质感的卫浴空间，自然和谐却层次分明，在自然光与灯光映衬下，展示了独特感与艺术感的同时，再给空间注入了几分清新的奢华感。

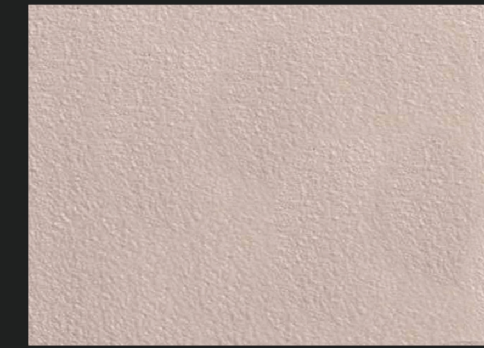
The bathroom space with rich texture is natural and harmonious, but with clear layers. Against the background of natural light and light, it shows a unique sense and artistic sense, and injects a fresh sense of luxury into the space.



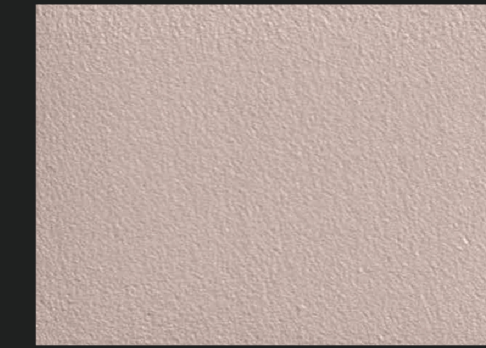
ASTI-MC0331(30g)



ASTI-MC0341(30g)



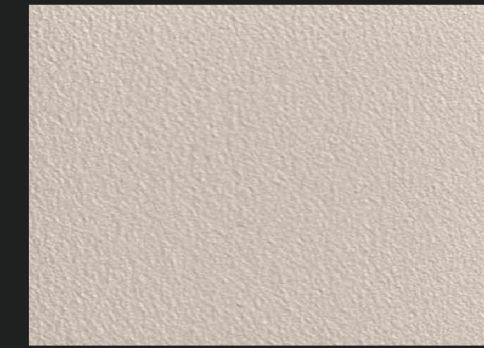
ASTI-MC0351(30g)



ASTI-MC0361(30g)



ASTI-MC0332(70g)



ASTI-MC0342(70g)



ASTI-MC0352(70g)



ASTI-MC0362(70g)



ASTI-MC0333(120g)



ASTI-MC0343(120g)



ASTI-MC0353(120g)



ASTI-MC0363(120g)



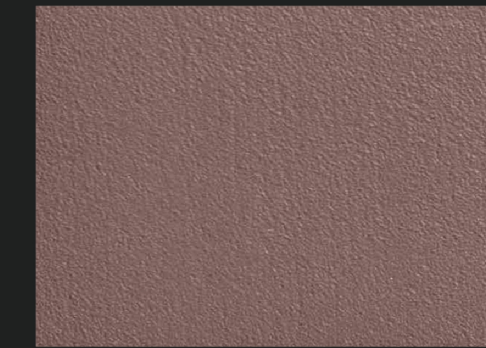
ASTI-MC0334(200g)



ASTI-MC0344(200g)



ASTI-MC0354(200g)



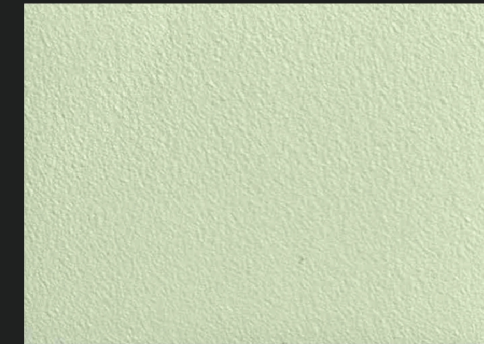
ASTI-MC0364(200g)

INTERESTING PAINT

极简主义的设计手法结合微水泥艺术漆, 以及张弛有度的设计元素, 使空间处于简而不空的微妙平衡之中, 各种材质和颜色互补呼应, 打造出宁静安详的极致空间, 让人感受到空间的温暖、放松。

Minimalist design techniques combined with micro cement art paint, as well as relaxation design elements, make the space in a simple but not empty delicate balance, all kinds of materials and colors complementary echo, create a quiet and serene ultimate space, let people feel the warmth and relaxation of the space.

MORANDI MICRO CEMENT



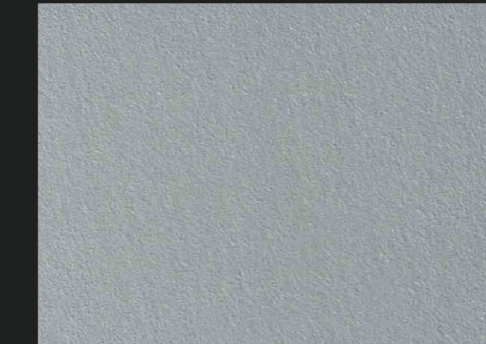
ASTI-MC0371(30g)



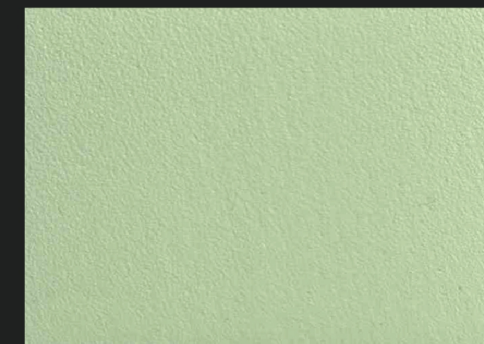
ASTI-MC0381(30g)



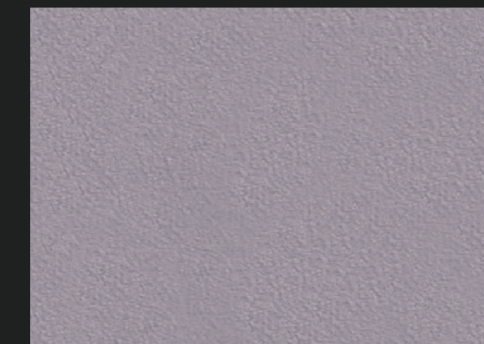
ASTI-MC0391(30g)



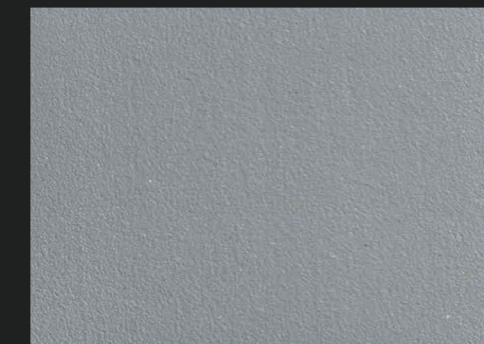
ASTI-MC0401(30g)



ASTI-MC0372(70g)



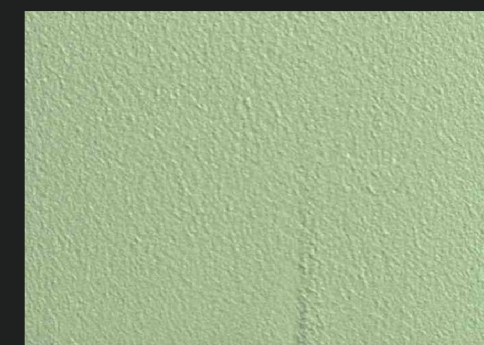
ASTI-MC0382(70g)



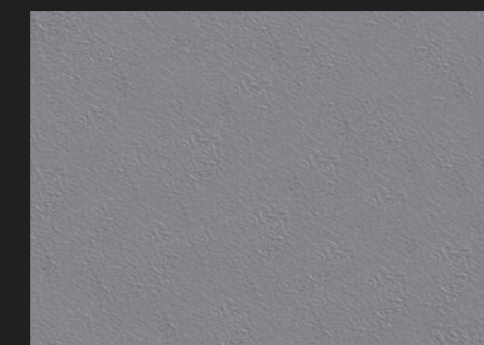
ASTI-MC0392(70g)



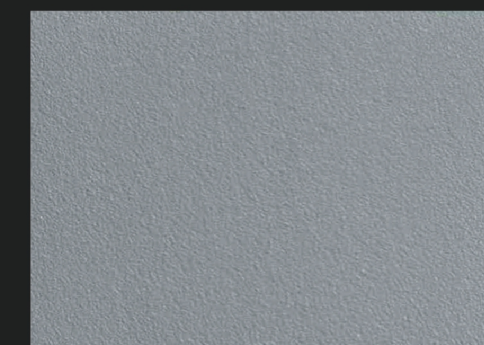
ASTI-MC0402(70g)



ASTI-MC0373(120g)



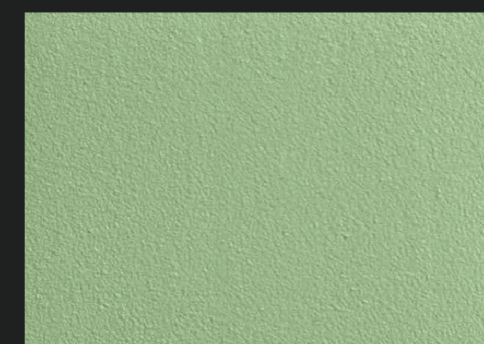
ASTI-MC0383(120g)



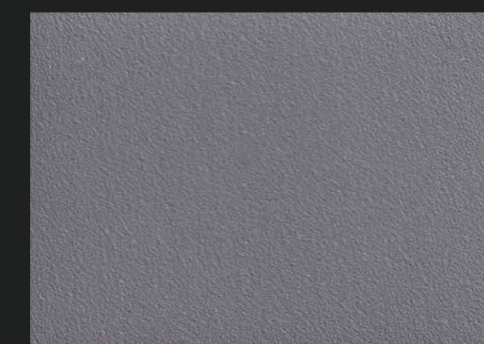
ASTI-MC0393(120g)



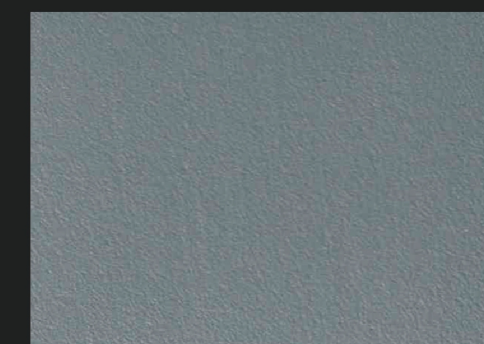
ASTI-MC0403(120g)



ASTI-MC0374(200g)



ASTI-MC0384(200g)



ASTI-MC0394(200g)



ASTI-MC0404(200g)



扫码观看施工工序

温馨提示: 本色卡的颜色为色样, 产品采用色浆颜料, 标准颜色以产品为准, 顾客可根据需要来样定做。

WARM TIP: THE COLOR OF THIS COLOR CARD IS THE COLOR SAMPLE. THE PRODUCT ADOPTS COLOR PASTE PIGMENT. THE STANDARD COLOR IS SUBJECT TO THE PRODUCT. CUSTOMERS CAN CUSTOMIZE IT ACCORDING TO THEIR NEEDS.