



【中国运营中心】CHINA OPERATION CENTER
NO. 19, SANSHUI INDUSTRIAL PARK, SHATANG VILLAGE, LEPING TOWN, SANSHUI DISTRICT, FOSHAN CITY, GUANGDONG PROVINCE

☎ 400-078-0177 | 🌐 www.astipaint.com



Pasa

ASTI PASA SERIES
阿斯缔帕莎系列

I N T E R E S T I N G P A I N T



Pasa

ASTI PASA SERIES

帕莎 PASA



纯粹的质感，纯净的气息，像是天然岩石的高级独白，是淡雅、是克制、是温柔、是更深层次的感官共鸣。以天然石英砂与树脂乳液为基料，勾勒出如细腻温暖的画卷，赋予其极强强烈的表现力，仿佛在诉说着理性与感性碰撞构建出生动优美的旋律。

Pure texture and pure breath, like the advanced monologue of natural rocks, are elegant, restrained, gentle and deeper sensory resonance. With natural quartz sand and resin lotion as the base material, it outlines a delicate and warm picture, endows it with strong expressive force, as if it is telling the collision between rationality and sensibility to build a dynamic and beautiful melody.



ASTI-PASA7201-1 (5g)



ASTI-PASA7202-1 (5g)



ASTI-PASA7203-1 (5g)



ASTI-PASA7204-1 (5g)



ASTI-PASA7205-1 (5g)



ASTI-PASA7206-1 (5g)



ASTI-PASA7207-1 (5g)



ASTI-PASA7208-1 (5g)



ASTI-PASA7209-1 (5g)



ASTI-PASA7210-1 (5g)



ASTI-PASA7211-1 (5g)



ASTI-PASA7212-1 (5g)



ASTI-PASA7201-2 (25g)



ASTI-PASA7202-2 (25g)



ASTI-PASA7203-2 (25g)



ASTI-PASA7204-2 (25g)



ASTI-PASA7205-2 (25g)



ASTI-PASA7206-2 (25g)



ASTI-PASA7207-2 (25g)



ASTI-PASA7208-2 (25g)



ASTI-PASA7209-2 (25g)



ASTI-PASA7210-2 (25g)



ASTI-PASA7211-2 (25g)



ASTI-PASA7212-2 (25g)



ASTI-PASA7201-3 (75g)



ASTI-PASA7202-3 (75g)



ASTI-PASA7203-3 (75g)



ASTI-PASA7204-3 (75g)



ASTI-PASA7205-3 (75g)



ASTI-PASA7206-3 (75g)



ASTI-PASA7207-3 (75g)



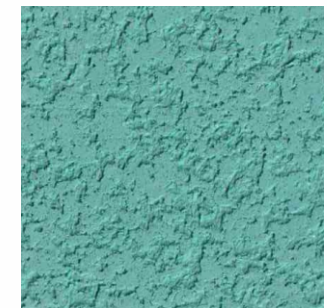
ASTI-PASA7208-3 (75g)



ASTI-PASA7209-3 (75g)



ASTI-PASA7210-3 (75g)



ASTI-PASA7211-3 (75g)



ASTI-PASA7212-3 (75g)



ASTI-PASA7201-4 (150g)



ASTI-PASA7202-4 (150g)



ASTI-PASA7203-4 (150g)



ASTI-PASA7204-4 (150g)



ASTI-PASA7205-4 (150g)



ASTI-PASA7206-4 (150g)



ASTI-PASA7207-4 (150g)



ASTI-PASA7208-4 (150g)



ASTI-PASA7209-4 (150g)



ASTI-PASA7210-4 (150g)



ASTI-PASA7211-4 (150g)



ASTI-PASA7212-4 (150g)



ASTI-PASA7213-1 (5g)



ASTI-PASA7214-1 (5g)



ASTI-PASA7215-1 (5g)



ASTI-PASA7216-1 (5g)



ASTI-PASA7217-1 (5g)



ASTI-PASA7218-1 (5g)



ASTI-PASA7219-1 (5g)



ASTI-PASA7220-1 (5g)



ASTI-PASA7221-1 (5g)



ASTI-PASA7222-1 (5g)



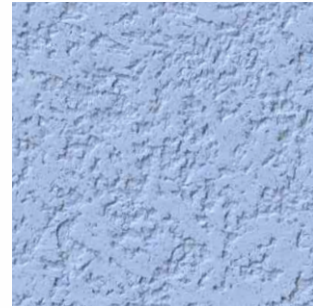
ASTI-PASA7223-1 (5g)



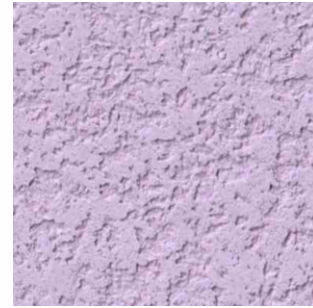
ASTI-PASA7224-1 (5g)



ASTI-PASA7213-2 (25g)



ASTI-PASA7214-2 (25g)



ASTI-PASA7215-2 (25g)



ASTI-PASA7216-2 (25g)



ASTI-PASA7217-2 (25g)



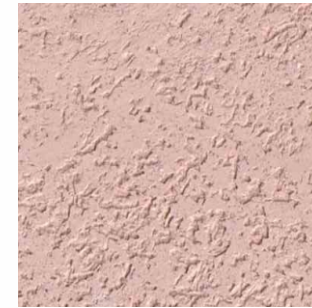
ASTI-PASA7218-2 (25g)



ASTI-PASA7219-2 (25g)



ASTI-PASA7220-2 (25g)



ASTI-PASA7221-2 (25g)



ASTI-PASA7222-2 (25g)



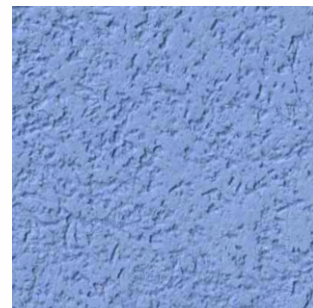
ASTI-PASA7223-2 (25g)



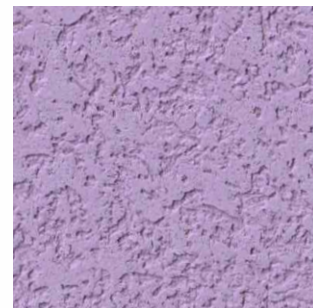
ASTI-PASA7224-2 (25g)



ASTI-PASA7213-3 (75g)



ASTI-PASA7214-3 (75g)



ASTI-PASA7215-3 (75g)



ASTI-PASA7216-3 (75g)



ASTI-PASA7217-3 (75g)



ASTI-PASA7218-3 (75g)



ASTI-PASA7219-3 (75g)



ASTI-PASA7220-3 (75g)



ASTI-PASA7221-3 (75g)



ASTI-PASA7222-3 (75g)



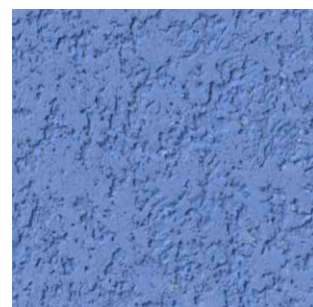
ASTI-PASA7223-3 (75g)



ASTI-PASA7224-3 (75g)



ASTI-PASA7213-4 (150g)



ASTI-PASA7214-4 (150g)



ASTI-PASA7215-4 (150g)



ASTI-PASA7216-4 (150g)



ASTI-PASA7217-4 (150g)



ASTI-PASA7218-4 (150g)



ASTI-PASA7219-4 (150g)



ASTI-PASA7220-4 (150g)



ASTI-PASA7221-4 (150g)



ASTI-PASA7222-4 (150g)



ASTI-PASA7223-4 (150g)



ASTI-PASA7224-4 (150g)



ASTI-PASA7225-1 (5g)



ASTI-PASA7226-1 (5g)



ASTI-PASA7227-1 (5g)



ASTI-PASA7228-1 (5g)



ASTI-PASA7229-1 (5g)



ASTI-PASA7230-1 (5g)



ASTI-PASA7231-1 (5g)



ASTI-PASA7232-1 (5g)



ASTI-PASA7233-1 (5g)



ASTI-PASA7234-1 (5g)



ASTI-PASA7235-1 (5g)



ASTI-PASA7236-1 (5g)



ASTI-PASA7225-2 (25g)



ASTI-PASA7226-2 (25g)



ASTI-PASA7227-2 (25g)



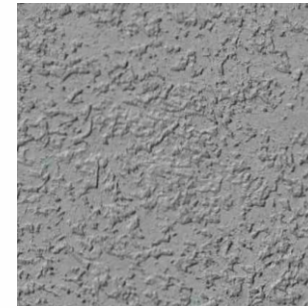
ASTI-PASA7228-2 (25g)



ASTI-PASA7229-2 (25g)



ASTI-PASA7230-2 (25g)



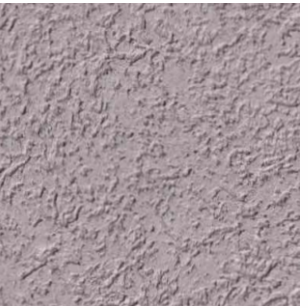
ASTI-PASA7231-2 (25g)



ASTI-PASA7232-2 (25g)



ASTI-PASA7233-2 (25g)



ASTI-PASA7234-2 (25g)



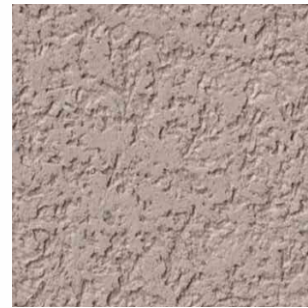
ASTI-PASA7235-2 (25g)



ASTI-PASA7236-2 (25g)



ASTI-PASA7225-3 (75g)



ASTI-PASA7226-3 (75g)



ASTI-PASA7227-3 (75g)



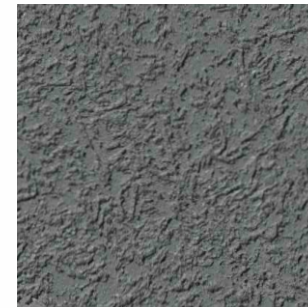
ASTI-PASA7228-3 (75g)



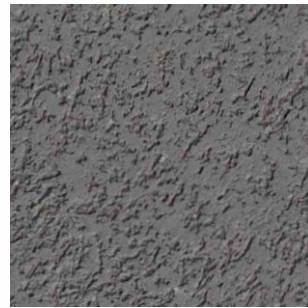
ASTI-PASA7229-3 (75g)



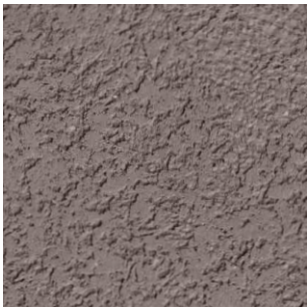
ASTI-PASA7230-3 (75g)



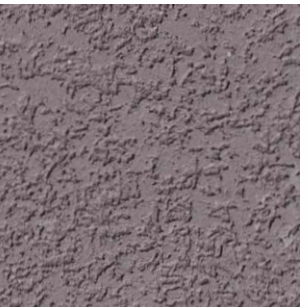
ASTI-PASA7231-3 (75g)



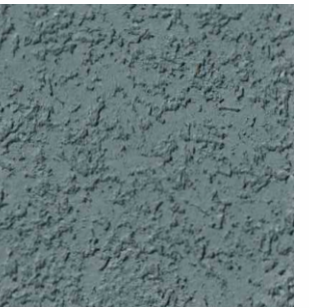
ASTI-PASA7232-3 (75g)



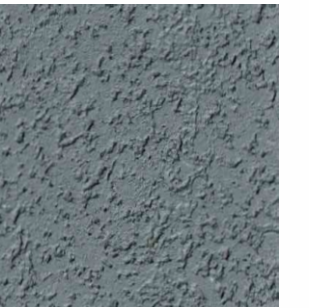
ASTI-PASA7233-3 (75g)



ASTI-PASA7234-3 (75g)



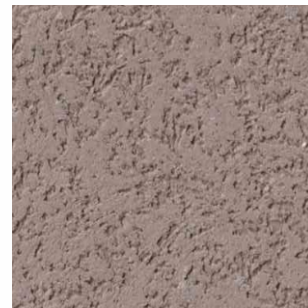
ASTI-PASA7235-3 (75g)



ASTI-PASA7236-3 (75g)



ASTI-PASA7225-4 (150g)



ASTI-PASA7226-4 (150g)



ASTI-PASA7227-4 (150g)



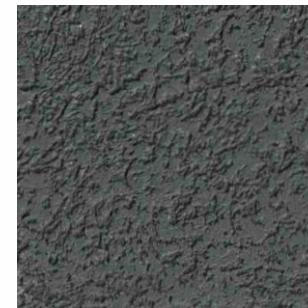
ASTI-PASA7228-4 (150g)



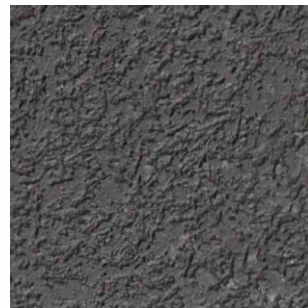
ASTI-PASA7229-4 (150g)



ASTI-PASA7230-4 (150g)



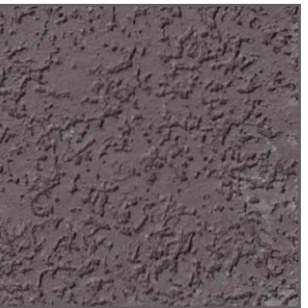
ASTI-PASA7231-4 (150g)



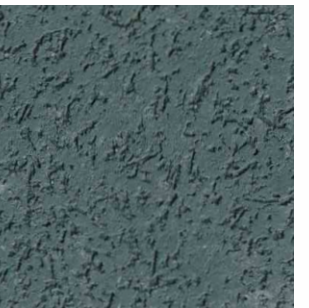
ASTI-PASA7232-4 (150g)



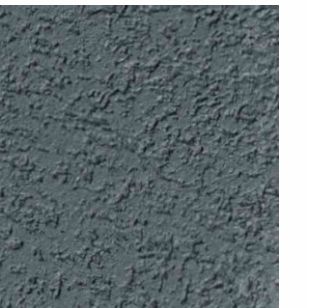
ASTI-PASA7233-4 (150g)



ASTI-PASA7234-4 (150g)



ASTI-PASA7235-4 (150g)



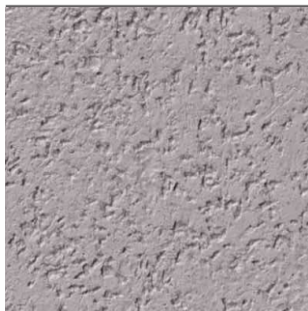
ASTI-PASA7236-4 (150g)



ASTI-PASA7237-1 (5g)



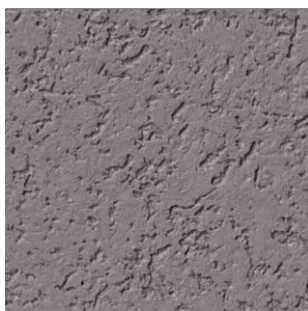
ASTI-PASA7238-1 (5g)



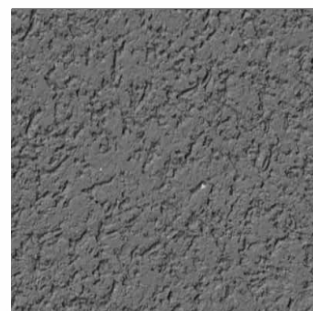
ASTI-PASA7237-2 (25g)



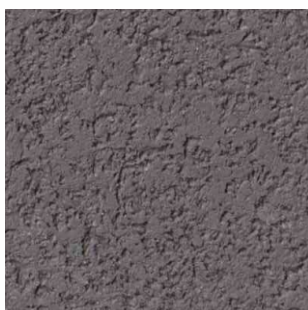
ASTI-PASA7238-2 (25g)



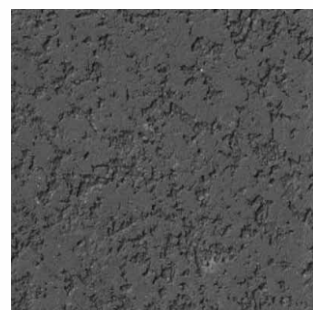
ASTI-PASA7237-3 (75g)



ASTI-PASA7238-3 (75g)



ASTI-PASA7237-4 (150g)



ASTI-PASA7238-4 (150g)



Pasa



Pasa

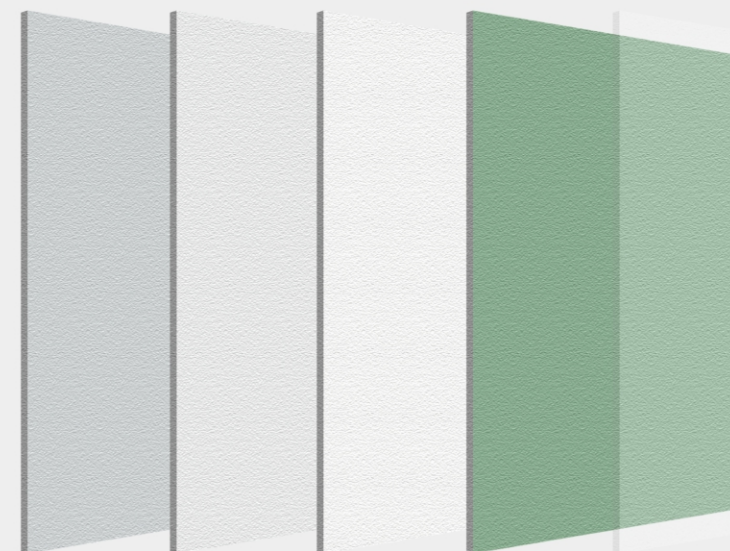


扫码观看施工视频



法国室内环境检测A+认证

ART OF SPACE



基层

腻子层

底漆层

雅晶石

罩面层

无机色浆 INORGANIC COLOR PASTE

主要用于ASTI帕莎的着色，全系列颜色分为38款，参考色卡的固定配比量调制自己想要的颜色。使用前先摇匀。

包装规格:150G/瓶

无机色浆，每款颜色按照不同的色浆调制成品颜色，同款颜色中，摄入量参照如下：

- | | |
|---------------------|----------------------|
| 1、25kg ASTI帕莎+5g色浆 | 2、25kg ASTI帕莎+25g色浆 |
| 3、25kg ASTI帕莎+75g色浆 | 4、25kg ASTI帕莎+150g色浆 |

可任意调节兑入的色浆重量，实现不同颜色。

施工工艺 CONSTRUCTION TECHNOLOGY

- 1、辊涂ASTI帕莎专用封闭底漆，必须完全封闭基层。
- 2、用批刀薄批，找平一遍(可允许有漏底现象)。
- 3、薄批第二遍，未于前用刮板，打圈刮出“虫蛀”纹理。
- 4、表干后，用批刀回压抛光即可。
- 5、干燥后轻微打磨，辊涂肌理精华液。

注意事项 POINTS FOR ATTENTION

- 1、温度>5℃，最好>10℃，相对湿度不高于85，大雨或大风、温度过低应停止施工。
- 2、由于涂料干燥时间过长，应注意天气预报，做好施工安排，避免在雨、雪来临前施工。
- 3、使用的涂料建议为同一生产厂家产品。
- 4、施工前应先详细了解施工工艺、每种配料的主要用途用法。
- 5、同一墙面同一颜色应用同批次的涂料连续施工，以保证颜色统一，不同批次，不易混用，避免产生色差。

温馨提示：本色卡的颜色为色样，标准颜色以生产产品为准，同型号不同批次产品会有色差。